

PROPOSED DRAINAGE AREA TABLE

AREA	DRAINAGE AREA	IMPERVIOUS DRAINAGE AREA
DISTURBED AREA TO MICROBIO #1	5,958 sf (0.137 ac)	2,490 sf (0.055 ac)
UN-DISTURBED AREA TO MICROBIO #1	1,577 sf (0.036 ac)	0 sf (0.000 ac)
DISTURBED ON-SITE AREA POI #1 (NOT TREATED)	10,024 sf (0.230 ac)	1,427 sf (0.033 ac)
UN-DISTURBED ON-SITE AREA POI #1	3,506 sf (0.080 ac)	3 sf (0.000 ac)
DISTURBED OFF-SITE AREA POI #1 (NOT TREATED)	958 sf (0.022 ac)	443 sf (0.010 ac)
UN-DISTURBED OFF-SITE AREA POI #1	2,130 sf (0.049 ac)	1,248 sf (0.029 ac)
<b>TOTAL TO POI #1</b>	<b>25,950 sf (0.619 ac)</b>	<b>5,521 sf (0.127 ac)</b>
DISTURBED AREA TO MICROBIO #2	3,411 sf (0.078 ac)	2,519 sf (0.058 ac)
UN-DISTURBED AREA TO MICROBIO #2	0 sf (0.000 ac)	0 sf (0.000 ac)
DISTURBED ON-SITE AREA POI #2 (NOT TREATED)	10,856 sf (0.249 ac)	1,551 sf (0.036 ac)
UN-DISTURBED ON-SITE AREA POI #2	8,041 sf (0.185 ac)	629 sf (0.014 ac)
DISTURBED OFF-SITE AREA POI #2 (NOT TREATED)	993 sf (0.023 ac)	567 sf (0.013 ac)
UN-DISTURBED OFF-SITE AREA POI #2	1,446 sf (0.033 ac)	1,166 sf (0.027 ac)
<b>TOTAL TO POI #2</b>	<b>25,789 sf (0.592 ac)</b>	<b>6,432 sf (0.148 ac)</b>

EXISTING LEGEND

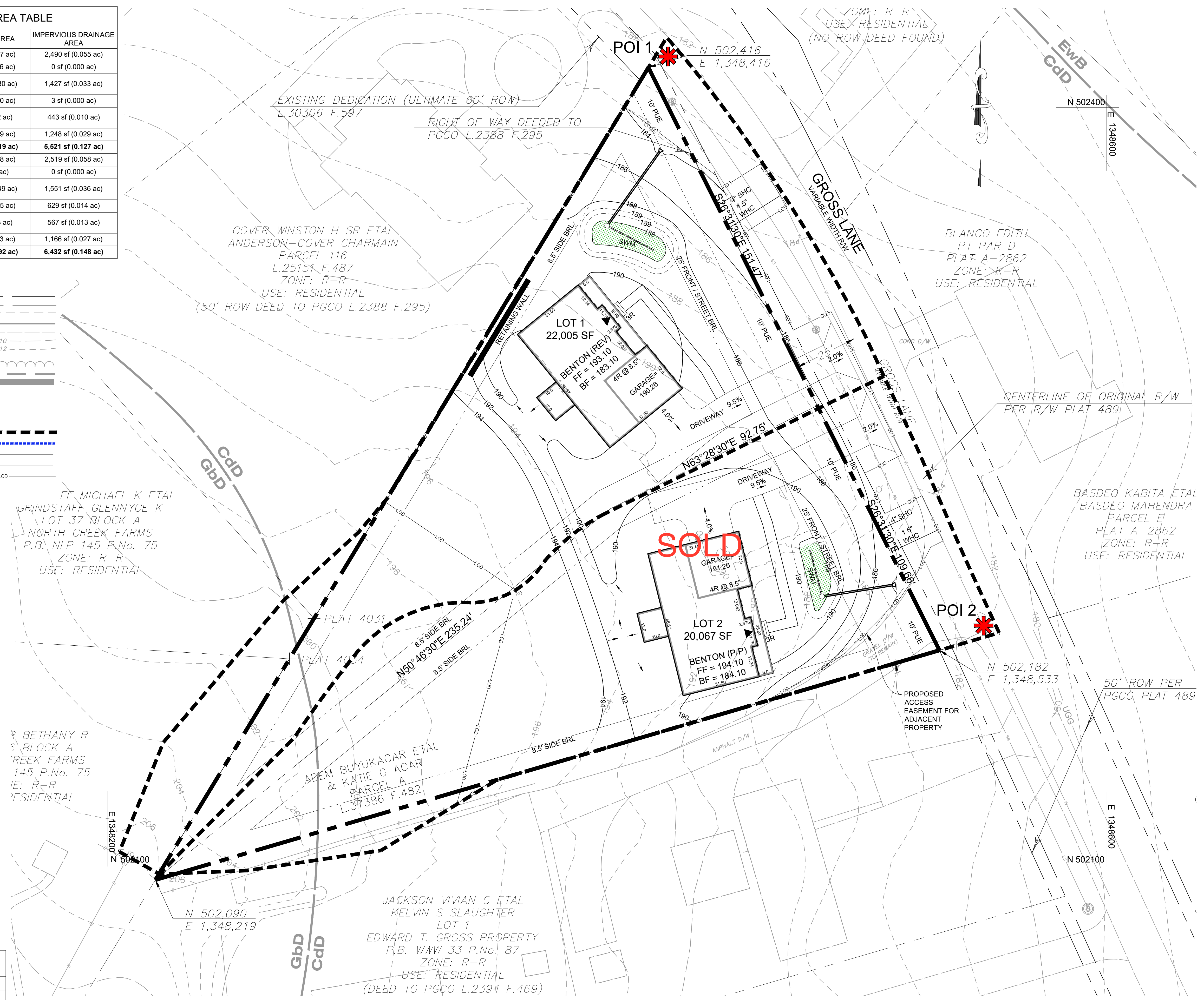
PROPERTY BOUNDARY	---
ADJACENT PROPERTY BOUNDARY	---
EXISTING BUILDING	---
EXISTING CURB	---
EXISTING EDGE OF PAVEMENT	---
EXISTING MAJOR CONTOUR	---
EXISTING MINOR CONTOUR	---
EXISTING SIDEWALK	---
EXISTING TREE LINE	---
SOIL BOUNDARY	---
15% OR GREATER STEEP SLOPES	---

PROPOSED LEGEND

DRAINAGE BOUNDARY	---
BIORETENTION DRAINAGE AREA	---
PROPOSED MAJOR CONTOUR	---
PROPOSED MINOR CONTOUR	---
LIMITS OF DISTURBANCE (LOD)	---
POINT OF INTEREST (STUDY POINT)	✳

HYDROLOGIC SOIL GROUP SUMMARY

MAP SYMBOL	HSG CLASS
CdD	D
GbD	A



**GROSS LANE**  
 10640 GROSS LANE  
 BELTSVILLE, MARYLAND  
 PRINCE GEORGE'S COUNTY  
 MARYLAND

TITLE: **ENVIRONMENTAL SITE  
 DEVELOPMENT GRADING  
 EROSION AND SEDIMENT  
 CONTROL**  
 PROPOSED DRAINAGE AREA MAP

NOTE  
 FOR LOCATION OF UTILITIES CALL  
 8-1-1 OR 1-800-257-7777  
 OR LOG ON TO  
 www.call811.com  
 http://www.misutility.net  
 48 HOURS IN ADVANCE OF ANY WORK  
 IN THIS VICINITY

DRAWN BY: NE  
 DESIGNED BY: MB/KAS  
 CHECKED BY: JMC  
 DATE: JUNE 2020

DEVELOPER / APPLICANT:  
 ALLEN ROY BUILDERS II, INC  
 PO BOX 188  
 CLARKSBURG, MD 20071  
 PH: 301.926.1007  
 CONTACT: JIM UNGER

CONTACT:  
 KEITH SOLOMON, P.E.  
 2101 GAITHER ROAD, SUITE 340  
 ROCKVILLE, MD 20850  
 PH: 301.337.2859  
 KSOLOMON@DEWBERRY.COM

ELECTION DISTRICT: 1  
 PLAT #A01-3405  
 TAX MAP: 13-F4  
 WSSC GRID: 215NE07

SCALE:  
 0' 20' 40'  
 1"=20'

NO.	DESCRIPTION	DATE	BY

SEAL:  
 Professional Certification: I hereby certify  
 that these documents were prepared or  
 approved by me, and that I am a duly  
 licensed professional engineer under the  
 laws of the State of Maryland.  
 License No. 18095  
 Expiration Date: 12/21/2020



**Dewberry**  
 Dewberry Engineers, Inc.  
 2101 GAITHER ROAD SUITE 340  
 ROCKVILLE, MD 20850  
 PH: 301.948.8300 FX: 301.258.7607  
 www.dewberry.com

PROJECT NO. 50112147  
**3**  
 SHEET NO. 3 OF 6